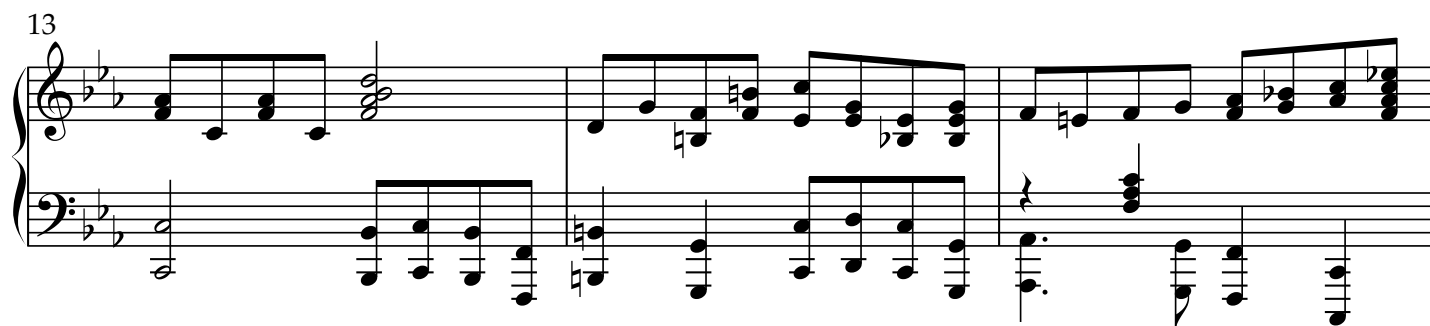
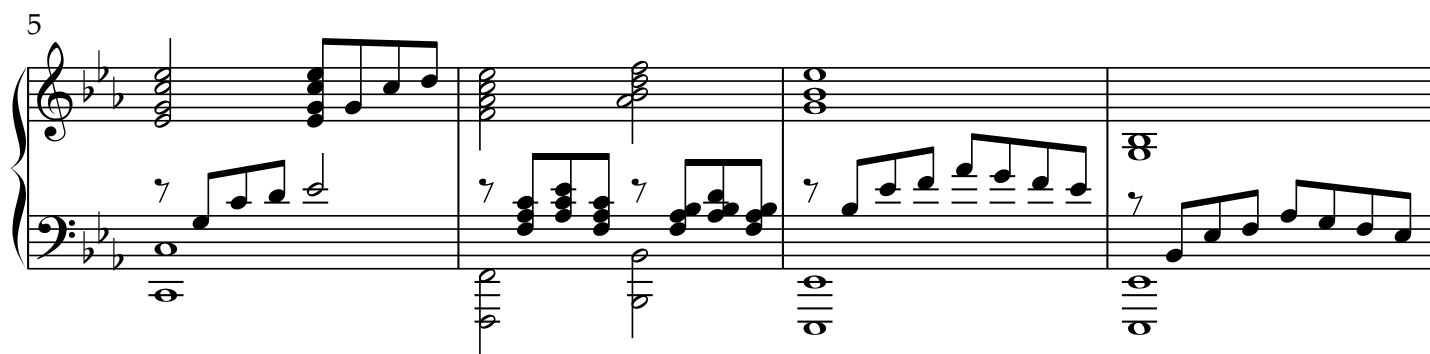
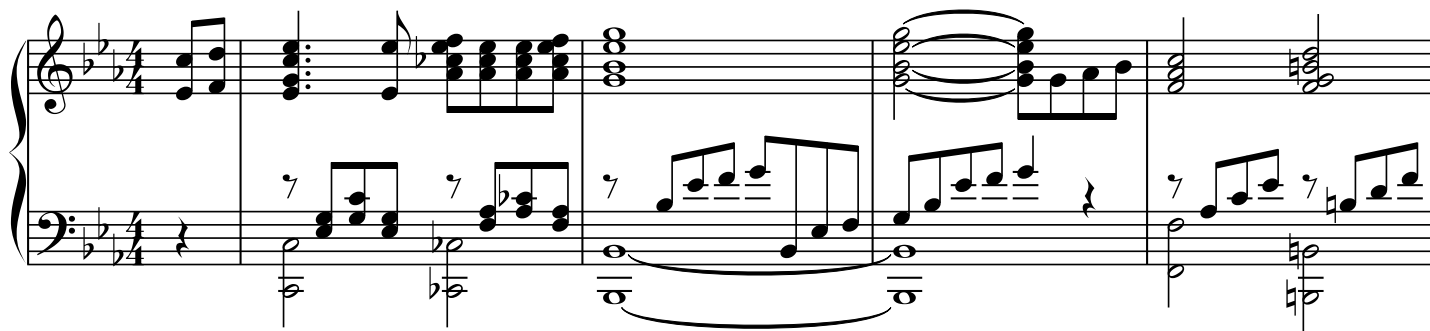


# О, неужели нас Иисус оставил?

Piano

Слова и музыка:  
Воробьев Сергей



2

Piano

19

Measures 19-22 of the piano score. The right hand features a melodic line with eighth and sixteenth notes, while the left hand provides a steady accompaniment with eighth notes and chords. The key signature has three flats (B-flat, E-flat, A-flat).

23

Measures 23-26 of the piano score. The right hand continues the melodic development with various intervals and rests. The left hand maintains the accompaniment pattern. The key signature remains three flats.

27

Measures 27-30 of the piano score. The right hand shows more complex rhythmic patterns, including triplets and sixteenth notes. The left hand accompaniment continues. The key signature remains three flats.

31

Measures 31-34 of the piano score. The right hand features a series of chords and moving lines. The left hand accompaniment includes a long, sweeping slur across measures 31 and 32. The key signature remains three flats.

35

Measures 35-38 of the piano score. The right hand has a melodic line with a repeat sign and first/second endings. The left hand accompaniment continues. The key signature remains three flats.

Piano

3

39

Measures 39-42 of a piano piece. The key signature has three flats (B-flat, E-flat, A-flat). The melody in the right hand features a series of chords and eighth notes. The left hand provides a steady accompaniment with eighth notes and chords. Measure 42 ends with a repeat sign.

43

Measures 43-46 of a piano piece. The melody continues with similar chordal textures. The left hand accompaniment remains consistent with eighth-note patterns. Measure 46 ends with a repeat sign.

47

Measures 47-50 of a piano piece. The right hand melody becomes more active with sixteenth-note runs. The left hand continues with eighth-note accompaniment. Measure 50 ends with a repeat sign.

51

Measures 51-54 of a piano piece. The right hand features a series of chords and eighth notes. The left hand accompaniment consists of eighth notes and chords. Measure 54 ends with a repeat sign.

55

Measures 55-58 of a piano piece. The right hand melody includes sixteenth-note runs. The left hand accompaniment continues with eighth notes and chords. Measure 58 ends with a repeat sign.